

Communicating Power

MIDTRONICS

CELLTRON[®] ADVANCED Stationary Battery String Analyzer

The CELLTRON ADVANCED is a professional level tool for stationary battery management. Research proven technology and field-tested design make it a must for critical power maintenance.

Features:

- Voltage measurement to 3 decimal places
- Reduced testing time
- 16 volt testing capability
- Tests multiple intercell connectors & 8 posts
- Compatible with the PowerSure database
- Quick, simple, safe & accurate operation
- High ampere-hour (up to 6000 AH) testing capability
- 16 internal memory registers capable of storing 480 consecutive test results and overall string statistics
- Enhanced backlit display and screen resolution
- Voltage logging only option
- Quick reset option for erroneous test entries
- Measures individual cell and overall string health and voltage
- Consistent, repeatable on-line testing without discharge to batteries
- Tests 2-volt through 16-volt batteries on-line or off-line
- Provides advanced warning of potential battery failures
- Test each cell in under 10 seconds
- Helps prioritize battery replacements for more cost-effective system management
- Tests both battery cell and intercell strap integrity
- No external power source needed
- Portable IR wireless printing and data transfer to PC laptop
- User definable battery reference number storage and fault thresholds



INNOVATION



TECHNOLOGY



QUALITY



WORLDWIDE

CELLTRON[®] ADVANCED

Stationary Battery String Analyzer

Specifications

Model Number:
CTA-4000 (Kit); CTA-2000 (Analyzer Only)

Applications:
Tests individual lead acid cells or monoblocs (up to 16 Volts) in any common configuration

Voltage:
1.0 - 20 Volts DC

Conductance:
100 - 19,990 Siemens

Test Data Storage:
16 string locations of 480 test results stored internally

Accuracy:
+ 2% across test range

Voltmeter Resolution:
5 mV DC

User Programmable Functions:

- Preset values for over 250 battery types
- Low voltage alarm setting
- Low conductance warning / failure

Calibration:
Auto-calibration prior to every test, no future calibration required

Power Requirements:
9.6, 1600 mA, NiMH rechargeable battery pack & charger

Environmental Operating Range:
0 to +40°C, 95% relative humidity, non-condensing

Storage Temperature:
-20 to 82°C

Over Voltage Protection:

- Fused protection to 16 volts DC
- Reverse polarity protected

Housing Material:
Acid resistant ABS plastic

Analyzer Dimensions:
9 in x 4 in x 2 1/2 in
230 mm x 102 mm x 65 mm

Case Dimensions:
19 in x 15.5 in x 5 in
750 mm x 610 mm x 200 mm

Analyzer Weight:
2 lb / 907 gm

CTA-4000 Test Kit Shipping Weight:
14 lb / 6.4 kg



CTA-4000 Kit

Accessories included in CTA-4000 Kit

- Protective boot
- Rechargeable battery pack
- Infrared PC data receiver & software
- Infrared printer
- Infrared temperature sensor
- Protective carrying case
- Both clamp and probe cables
- Spare fuses, printer paper, probe tips

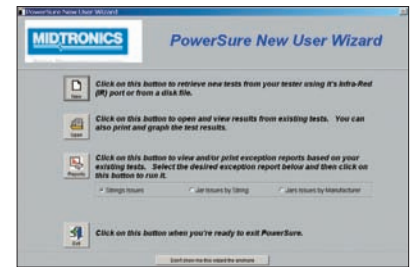


POWERSURE TEST RESULTS

Test Configuration Name: Readings for This Test (in Air Order)

Test Status Information

Cell No.	Voltage	Temp.	Conductance	Capacity
1	12.75	25.0	1000	1000
2	12.75	25.0	1000	1000
3	12.75	25.0	1000	1000
4	12.75	25.0	1000	1000
5	12.75	25.0	1000	1000
6	12.75	25.0	1000	1000
7	12.75	25.0	1000	1000
8	12.75	25.0	1000	1000
9	12.75	25.0	1000	1000
10	12.75	25.0	1000	1000
11	12.75	25.0	1000	1000
12	12.75	25.0	1000	1000
13	12.75	25.0	1000	1000
14	12.75	25.0	1000	1000
15	12.75	25.0	1000	1000
16	12.75	25.0	1000	1000



CTA-4000 Kit includes the new Midtronics PowerSure™ Battery Management Database—offering a complete data collection and reporting tool.

Corporate Headquarters
Willowbrook, IL USA
USA Toll Free: 1.800.776.1995
Phone: 1.630.323.2800
Fax: 1.630.323.2844
E-Mail: net2@midtronics.com

Canadian Inquiries
Toll Free: 1.866.592.8053
Fax: 1.630.323.7752
E-Mail: canada@midtronics.com

Midtronics b.v.
European Headquarters
Serving Europe, Africa, the Middle East, and The Netherlands
Phone: +31 306 868 150
Fax: +31 306 868 158
E-Mail: info-europe@midtronics.com

European Sales Locations
IJsselstein, The Netherlands
Paris, France
Dusseldorf, Germany

Midtronics China Office
China Operations
Shenzhen, China
Phone: +86 755 8202 2037
Fax: +86 755 8202 2039
E-Mail: chinainfo@midtronics.com
Asia/Pacific (excluding China)
Contact Corporate Headquarters at +1.630.323.2800 or
E-Mail: asiapacinfo@midtronics.com