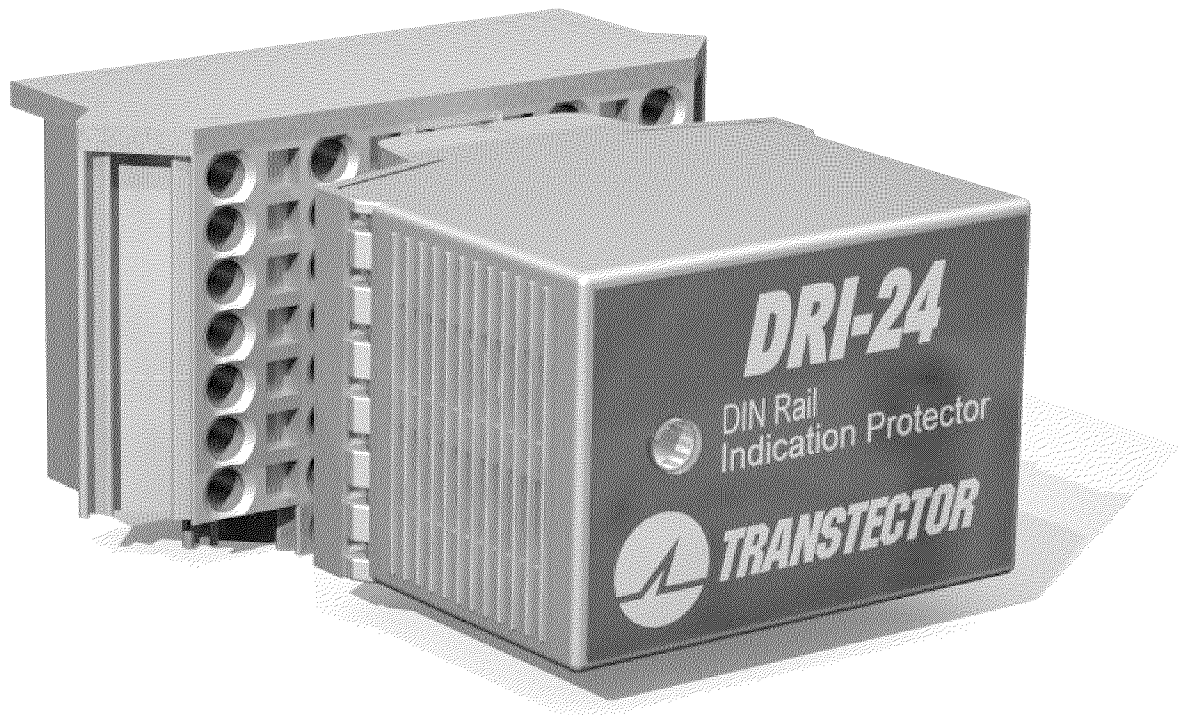



THIS DRAWING HAS BEEN GENERATED AND IS MAINTAINED BY A CAD SYSTEM. CHANGES SHALL ONLY BE INCORPORATED AS DIRECTED BY THE DESIGN ACTIVITY.

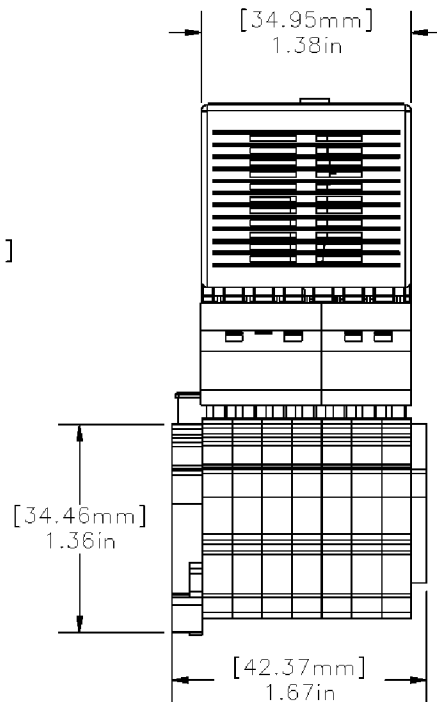
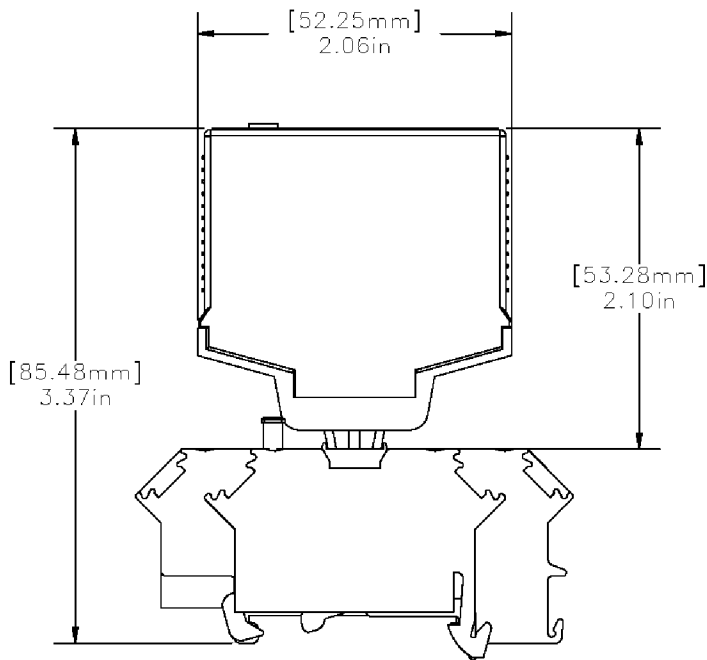
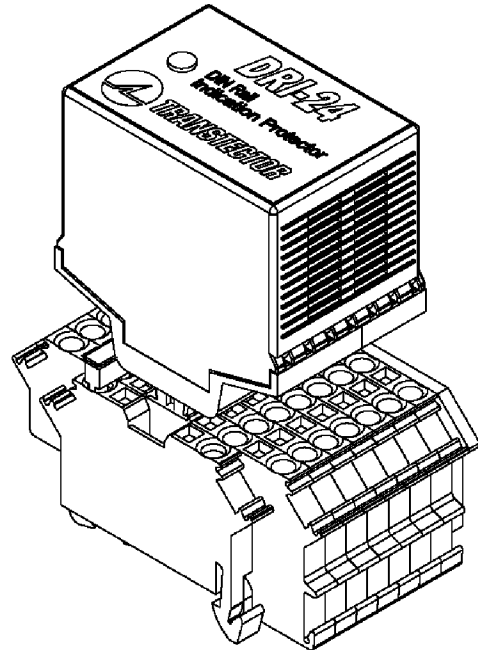
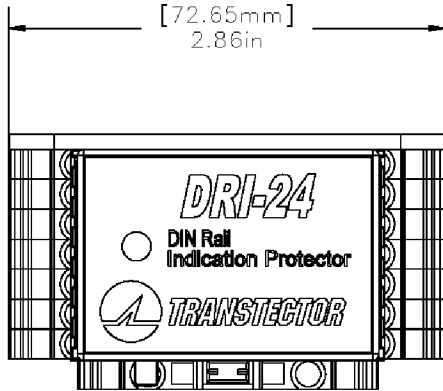
REVISIONS

LTR	DESCRIPTION	ECO NUM.	DATE	APPROVED
A	PRELIMINARY RELEASE	DD086	5/22/07	MLH
B	SEC. 1 REMOVE RAIL YARD AND SWITCHING	6913	7/17/07	MLH
C	ADD -W MODELS CHANGE PERFORMANCE VOLTAGE	7332	3/25/08	MPD



UNLESS OTHERWISE SPECIFIED DIM. IN INCHES BEFORE PLATING	DRAWN: MLH	DATE 5/22/07	 Transtector Systems, Inc. 10701 Airport Road, Hayden, ID 83835 800.882.9110 208.772.8515 www.transtector.com	
	CHECKED: TC	5/26/07		
	ENGR. APPD: SEH	6/26/07		
	PROJ. APPD: MPD	6/26/07		
MATERIAL:	APPROVED:		TITLE:	
NOTED			SPECIFICATION DRI-24 pn 1101-869, 1101-869-W DRI-120 pn 1101-870, 1101-870-W	
NOTICE: THE INFORMATION AND DESIGN CONTAINED HEREIN IS THE PROPERTY OF TRANSTECTOR SYSTEMS. WHO RESERVES ALL RIGHTS THERETO	SIZE A	CAGE 30992	DRAWING NUMBER 1400-613	REV C
	SCALE = N/A		PAGE 1 OF 4	

Mounting data: See diagram below.



[X.XX] = millimeters
X.XX = inches



NOTICE: THE INFORMATION AND DESIGN CONTAINED HEREIN IS THE PROPERTY OF TRANSTECTOR SYSTEMS, WHO RESERVES ALL RIGHTS THERETO.

SIZE
A

CAGE
30992

1400-613

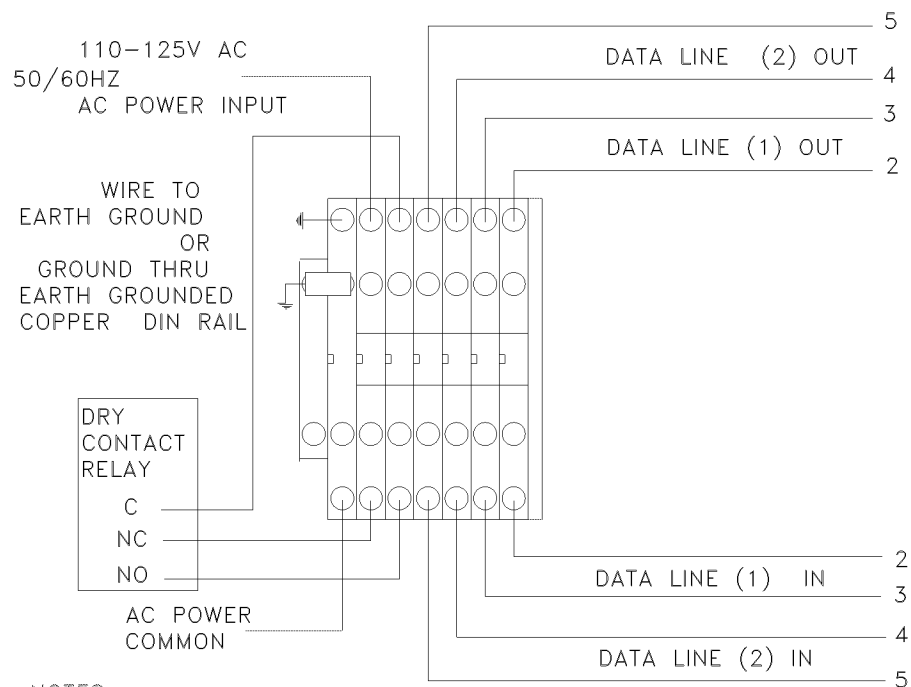
C

SCALE = NA

Page 3 OF 4

5. **Wiring data:** All wiring connections are made to the WAGO cage clamp terminal for use with 28AWG-12AWG solid or multi-strand wire. The suppressor terminal block assembly is provided with a ground block that if mounted to a copper or aluminum 35mm DIN Rail will ground the suppressor when bonded to the best ground (Earth) connection available. If using steel DIN rail remove the ground block and use a minimum 14 AWG stranded wire connected between the best ground available and the terminal block grounding input.

The DRI units connect into the WAGO 280 base via terminal connections as depicted below.



NOTES:

- INSTALLATION DATA LINE (VDC).....MAXIMUM INSTALLATION (VDC)
 DRI-24..... 24V 34V PEAK
 DRI-120.... 170V 180V PEAK
- DRY CONTACT RELAY RATING: 3A/30V DC, 3A/125V AC.